

ViewScape



Total Image Control

The ViewScape is a multi-input, multi-display control device which allows you to show a multitude of windowed inputs onto a set-up of combined displays, e.g. a wide screen, edge-blended projection set-up.

Able to control both projection and plasma displays directly and LED displays indirectly, the ViewScape offers a wide range of effects such as alpha blending, chroma keying and z-order control.

Barco's ViewScape comes fully equipped with all necessary hardware and control software.

IVS TECHNOLOGIES

www.ivstechnologies.com
ZI La Montjoie
1, rue des Drapiers
93210 LA PLAINE SAINT-DENIS
Tél. +33 (0)1 55 93 48 48
Fax: +33 (0)1 55 93 48 49



Endless creative possibilities

VIEW PORT
Pixel accurate defining of position and size of windowed inputs



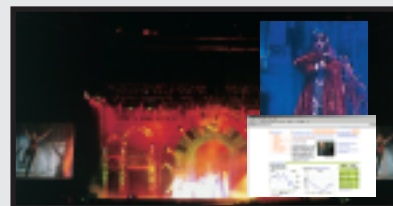
ZOOM
Within View Port you can zoom in and out

ALPHA-BLENDING
The ViewScape allows you to transform selected inputs into transparent overlays on the screen. The blending ratio can be user defined.



CHROMA-KEYING
Select keying colors and values to create odd-shaped overlays.

Z-ORDER CONTROL
Overlay windows in a dynamic way. Determine which windows to send to the back or bring to the front.



EDGE-BLENDING
Built-in edge-blending and feathering feature allows you to connect to any set of projectors and create smooth overlaps for panoramic ViewScapes.

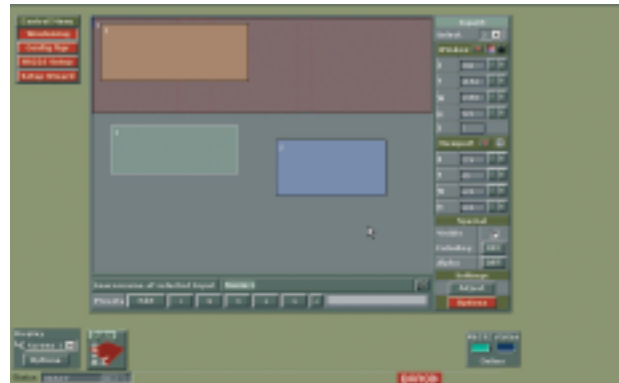
In combination with Barco's Events Controller, all these effects can be programmed on a timeline and hence can be used dynamically.

Total Image Control

A guided set-up menu with clear wiring diagrams facilitates the configuration of ViewScape hardware for a specific set-up. In case of a projection display, the built-in, dedicated test patterns enable a pixel accurate alignment of the projectors and their image overlap.

The total screen area is represented as a single canvas onto which the input sources can be arranged by a simple drag and drop operation.

Several such layouts can be stored as presets and recalled at any point during the show.



Extreme in and out

The ViewScape can take multiple inputs ranging from S-VHS and RGB Analog to SDI and DVI.

Each input, whether video or data, is processed at full resolution.

For multi-screen set-ups each input is multiplied according to the number of screens used.

Each ViewScape has two standard DVI A/D outputs, which can directly address any DVI-compliant projector, monitor or plasma screen.

You can also combine your ViewScape with any LED wall through the Barco D320 L, or third party LED wall processor.

Each output delivers a high-speed connection up to UXGA (1600 x 1200 pixels). Combine 2 or more ViewScapes to address up to 4 screens, resulting in a display with an extremely high resolution



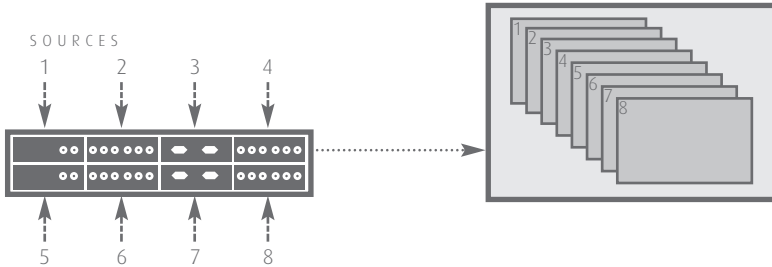
Total display resolution in edge blended set-up: *

		Number of projectors				
		1	2	3	4	
Projector type	XGA	1024	1948	2872	3796	768
	SXGA	1280	2460	3640	4820	1024
	UXGA	1600	3100	4600	6100	1200
resolution:		horizontal				vertical

* with overlap area set to 100 pixels

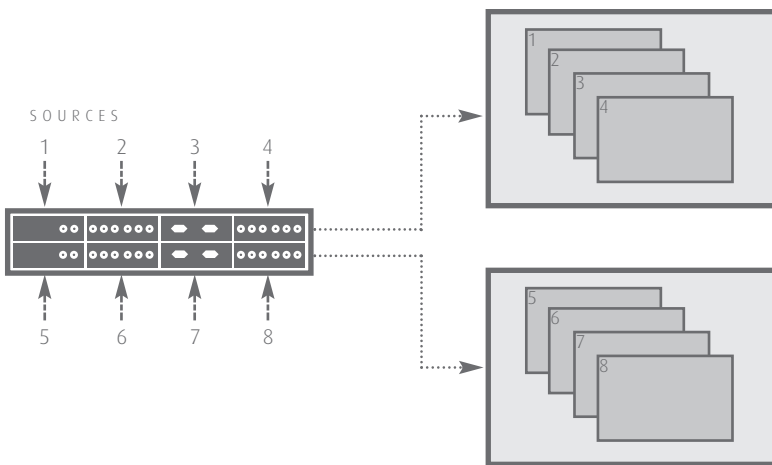
Flexible display solutions

• Single unit / single screen

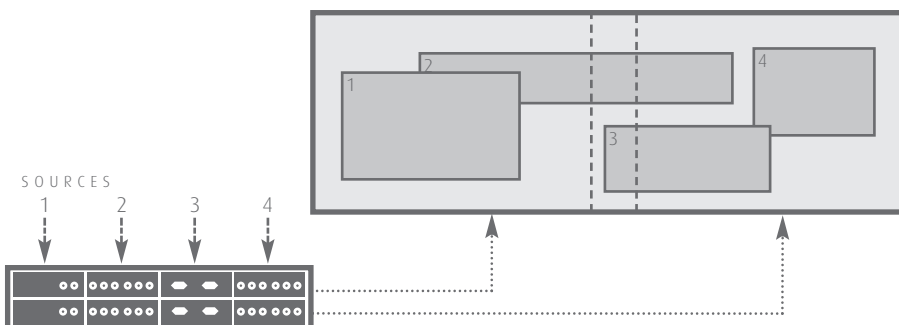


- Display multiple sources on a single screen
- Input switching and windowing
- Up to 8 different input sources
- One output used

• Single unit / multi screen



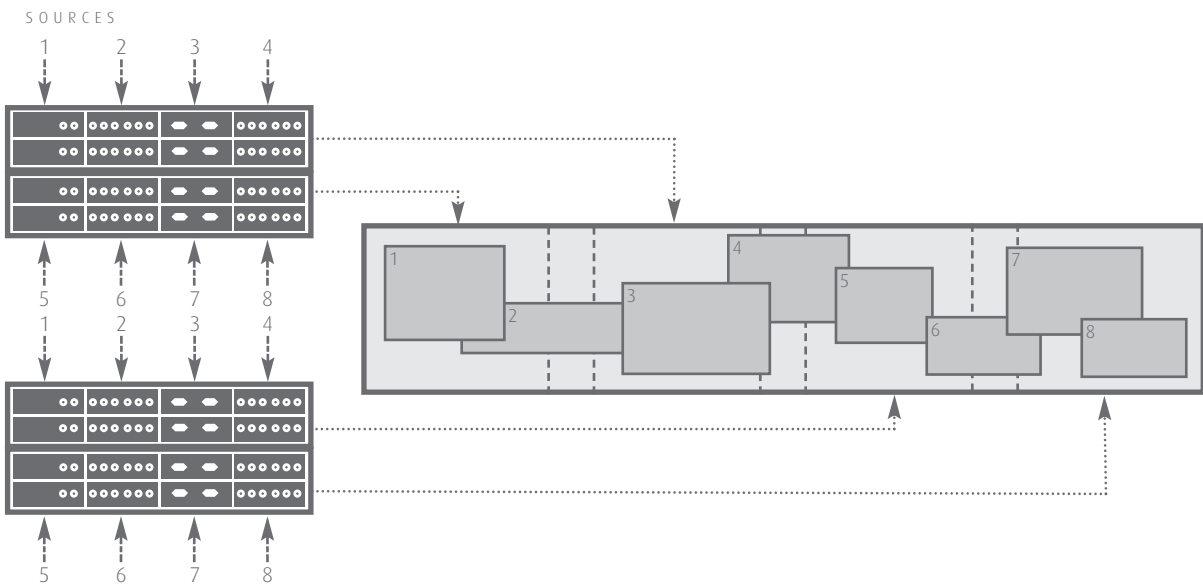
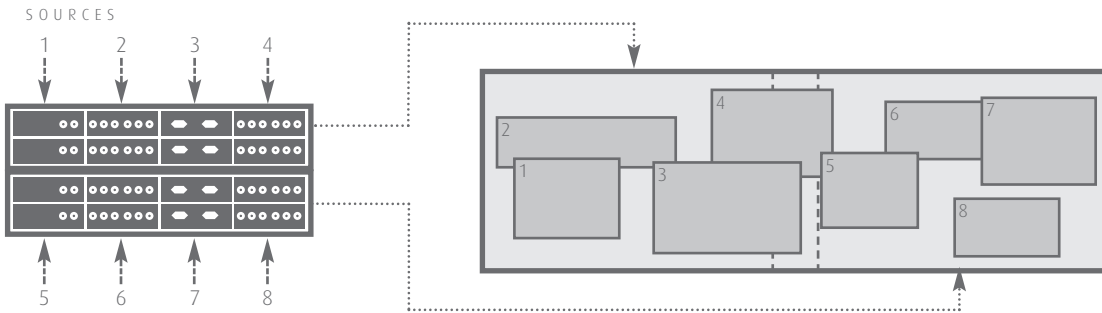
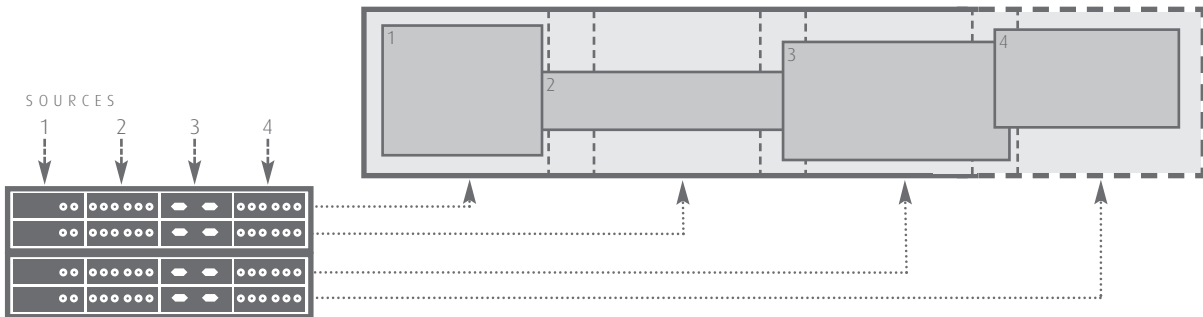
- Display multiple sources on 2 combined screens
- Up to 4 different input sources
- 2 outputs used
- Creation of overlap areas
- "Background"-function for multi-output computer display cards



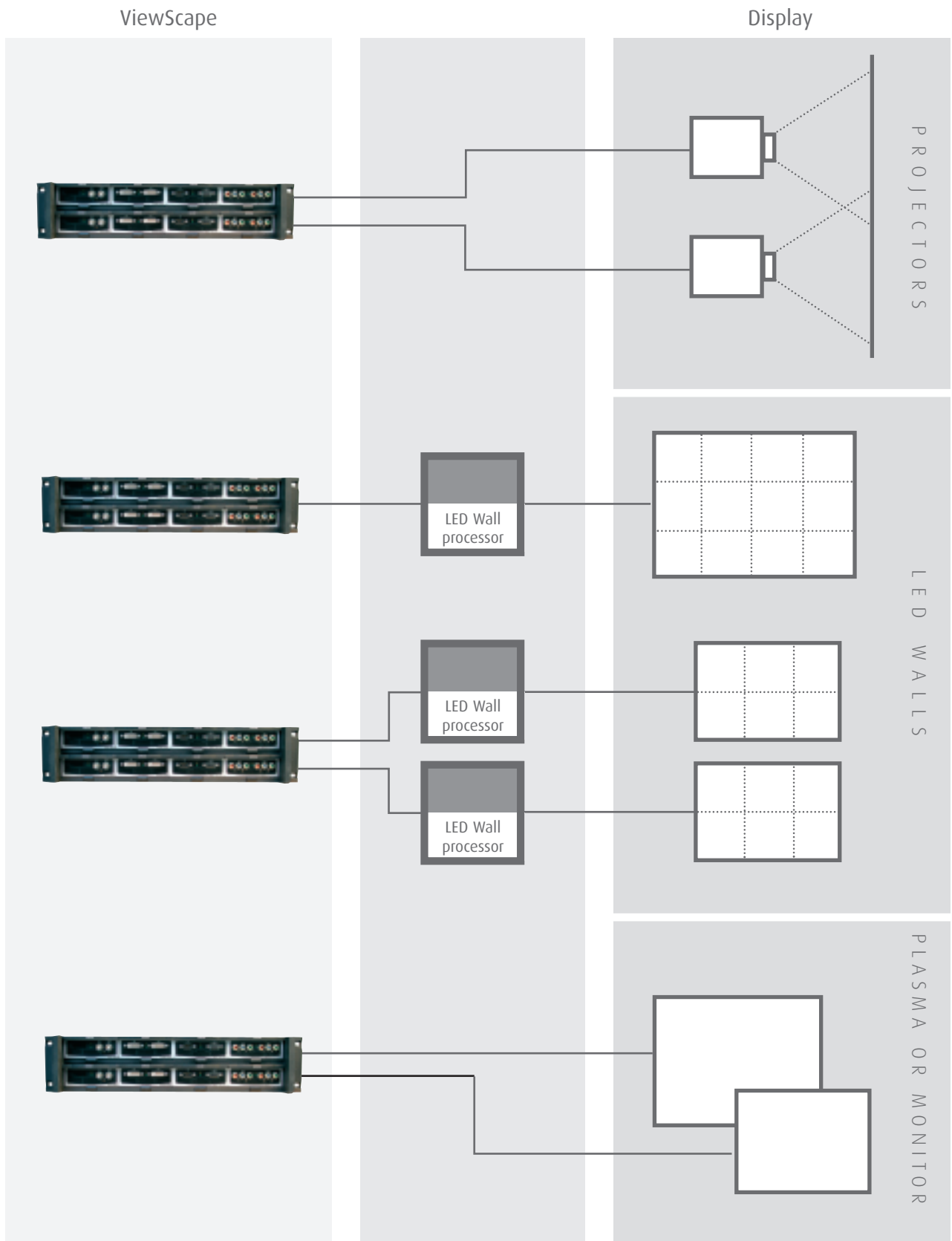
• Multi unit / multi screen

3x1 screen or 4x1 screen

- Display multiple sources on 3 or more combined screens
- Stacking of multiple ViewScapes to address more than 2 screens
- Chaining of multiple ViewScapes to increase number of inputs



Configuration Scheme



ViewScope specifications

· Input	<ul style="list-style-type: none"> · 8 user-defined inputs included · Front accessible · Integrated video processing · Auto sensing, hot swappable · S-video, composite, YUV, RGB · SDI, HD-SDI Data DVI up to UXGA
· Compatibility	<ul style="list-style-type: none"> Direct: Projectors, plasma screens, DVI compatible monitors and others Indirect: LED Displays (through Barco or third party processor)
· Output	<ul style="list-style-type: none"> · 2 x DVI-A, DVI-D, RGB
· Control	<ul style="list-style-type: none"> Scaler: 8 input channels [Data-Video] fully scalable to desired output resolution Z-order control: Instant modification of Z-order control, for each output window Window positioning: Intuitive positioning interface Connectors: Soft Edge overlap, RS 232 [RJ11]
· Effects	<ul style="list-style-type: none"> · Anamorphic imaging · Chroma-keying [per input] · Alpha-keying [per input] · Z-order control · Windowing, viewports
· Operating Temperature	0°C <> 45°C (32°F <> 113°F)
· Power	<ul style="list-style-type: none"> · 240W · Auto ranging 90-264V (50-60 Hz) · Connector: 3pin IEC

· Ordering info	R9851590
· Input modules	
Video, S-Video	R9850920
YUV	R9850940
RGB analogue	R9851710
DVI	R9850960
SDI	R9850970
HD-SDI	R9850980

- Up to 8 fully configurable inputs
- Up to two outputs
- 19 inch rack mountable
- Standard equipped with controlling software
- Multi purpose device: addresses multitude of different display types
- Arrange your sources onto your display through an intuitive interface. Scale and position all sources exactly how you want them.
- Overlay sources using advanced chroma-keying and alpha-blending features
- Processes video and data in pure quality onto your display
- Compatible with all standard image formats
- Integrated edge-blending feature

· Dimensions

482 x 486 x 105 mm (LxWxD)



* Inputs may vary depending on customer need

IVS TECHNOLOGIES

www.ivstechnologies.com

ZI La Montjoie

1, rue des Drapiers

93210 LA PLAINE SAINT-DENIS

Tél. +33 (0)1 55 93 48 48

Fax:+33 (0)1 55 93 48 49

